

USER MANUAL

Bubble Machine

V1.0
2024/09/10



SHOWVEN Technologies Co., Ltd.

Thanks for choosing SHOWVEN® Bubble generator, we wish it will bring you lots of exciting moments.

Please read the following manual carefully before operating this product.

Δ **SAFETY CONSIDERATIONS**

- ∨ Unauthorized repair are prohibited, it may cause serious incident.
- ∨ Make sure power supply is consistent with the rated voltage of the equipment, and the socket must be well grounded. Unplug and turn off the machine when not in use.
- ∨ Please keep the machine dry, do not use in rain or snow. Do not use the machine when it is wet or there is fluid leakage from the machine.
- ∨ Allow sufficient air circulation around the machine at all times.
- ∨ For adult use only, ensure that any operation of the machine is by trained personnel.
- ∨ If the machine fails to work, please stop operation and unplug the machine. Check it carefully, if you can't solve the problem, please contact SHOWVEN® or your local SHOWVEN® partner for advice.
- ∨ ONLY use SHOWVEN® original FX-BS bubble fluid.
- ∨ In case of eye contact with fog fluid, please wash it with clean water. If fluid is swallowed immediately look for medical advice.
- ∨ Avoid directing bubble output at people, structures or objects within close proximity of the output nozzle.
- ∨ Be aware of the wet floor if used for a long period of time.
- ∨ The device shall not be altered and applied to other uses.

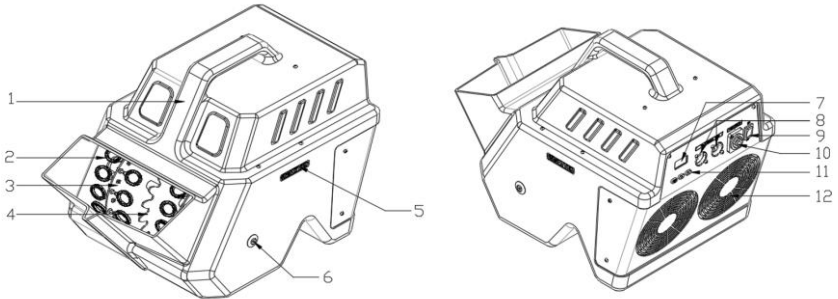
Δ **Functional Characteristics**

- ∨ Compact molding structure, leak proof
- ∨ Higher bubble output, wider coverage
- ∨ Enormous bubble generation
- ∨ 18650 battery powered design, support 3h continuous output (depend on battery)
- ∨ Control: DMX, MANUAL, WIRELESS REMOTE
- ∨ User friendly LCD control panel
- ∨ 2L fluid tank, support 1h continuous output.

Δ **Technical Specifications**

- ∨ **Dimension:** 435×266×305mm
- ∨ **Voltage:** AC100-240V, 50 / 60Hz
- ∨ **Work Power:** 30W
- ∨ **Fluid Tank Capacity:** 2L
- ∨ **DMX-512:** YES, standard 3-pin
- ∨ **Remote control:** YES
- ∨ **Output:** Appr.8m
- ∨ **Bubble Fluid Consumption:** 25ml/min
- ∨ **Consumable:** FX-BS Bubble Fluid
- ∨ **Battery Powered:** Yes, 3*18650 battery
- ∨ **Standby Time:** Appr. 3h (depends on battery)
- ∨ **Charging Time:** 1.5h
- ∨ **Net Weight:** 4.8kg

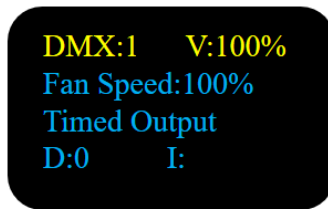
Δ Product Overview



1. Bubble machine housing
2. Bubble generation loop
3. Bubble generation loop holder
4. Rotate gear
5. Logo
6. Rotate shaft screw
7. Display
8. 3-Pin DMX
9. Power switch
10. Neutrik PowerCON TRUE1 Chassis
11. Keypad
12. Fan air inlet

Δ Operation Panel

1. LED display area



TIME

VOLUME

MENU: switch through setup menu;

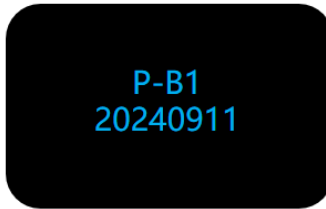
+: Parameter up; multiplex "TIME" (Bubble timed output mode according to setting)

-: Parameters down; multiplex "VOLUME" (continuous bubble output mode start)

NOTE: Screen will switch to main interface automatically if not press any button in 10s.

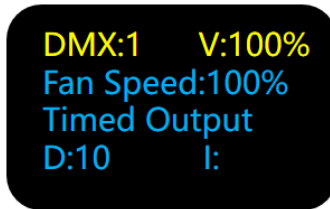
Δ Interface

1. Welcome Interface



Product model and software version.

2. Main Interface



First Line: DMX address and Battery Volume, “:” blinks when there is DMX in signal.

Second Line: Fan speed display, 10%-100%.

Third Line: Firing mode display: Timed output, continue output

Fourth Line: it will display the firing duration and interval time under timed output mode.

3. Setting Menu

Press “MENU” switch through setup menu.

Items	Value	Default	Explanation
Wireless Set	ON / OFF	OFF	Wireless function set
DMX Address	1~511	1	DMX address setup
Duration Set	5-600s	600s	Set bubble output duration
Interval Set	0-600s	0s	Set bubble output interval, 0 means it won't repeat only firing the setting duration time
Fan Speed	10%-100%	100%	Fan speed setup
语言(Language)	中文/English	English	Language switch
PowerOn Self Run	ON / OFF	ON	ON means machine will start working by following the setting (duration and interval) after power ON machine

Δ DMX Channel

Bubble machine occupy only 1 channel.

0 – 5: OFF

6 – 255: ON, 0-100% fan speed increase as DMX value increase.

Δ Operation

1. Installation

Check the machine and accessories, ensure it is in good status. Place the machine on a flat surface.

2. Fill the machine with FX-BS bubble fluid

Fill the FX-BS bubble fluid to liquid tray directly through the bubble output vent. Please not filling more than 2L fluid, too much fluid will lead to fluid overflow. Please use original bubble fluid from SHOWVEN®, Warranty will be void if any other type of bubble fluid is used.



3. Power ON bubble machine

- Connect the machine to suitable rated power supply. Please ensure power supply meets the requirement. Always connect the machine to a protected circuit and ensure it is properly grounded. If use built in battery please ignore this step.
- Turn on the machine.

4. Firing

Before firing please setting the bubble machine accordingly. There are three firing mode:

Manual firing:

Under manual firing, there are two different types: repeat firing, continuous firing.

Repeat firing steps as below:

- Press “menu” enter setting interface
- Set firing interval, for example set “Interval Set” 10s.
- Set firing duration, for example set “Duration Set” 5s
- Set fan speed, for example 100%
- Press “+” (TIME) button, bubble machine will generate bubbles by firing 5s and stop 10s, repeat this cycles until press “+” to stop. (if the interval set is 0 then it will any firing once).

Continuous firing:

Press “-” (VOLUME) button to start firing when machine under main interface. Press “-” again to stop firing.

Wireless firing with FXmote

DMX connection will deny wireless function of machine, please make sure no DMX cable connection on bubble machine if use FXmote to control bubble machine wirelessly.

- Power on FXmote, select device “FOG” on FXmote, back to main interface
- Press “menu” enter setting interface
- Set “Wireless set” to ON.
- Press “Set” on FXmote to pair bubble machine with FXmote.
- Press “ON” on FXmote machine start to generate bubble, press “OFF” stop.

DMX control

Wireless and manual firing function will be denied after bubble machine connect with DMX cable.

- Assign DMX address for each unit of bubble machine. If use SHOWVEN FXcommander to control the machine please allocate a unique DMX address for each unit of machine.

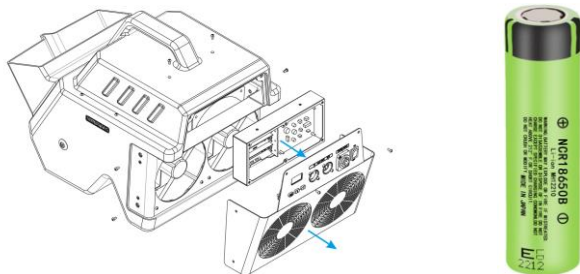
- b. Connect a DMX cable to the DMX IN socket of first unit of bubble machine, connect the male connector end of DMX cable to your DMX controller (FXcommander, light console etc).
- c. Connect a DMX cable to the DMX OUT of previous machine, and the other end of to the DMX IN of next machine. Connect all devices in series in this way.
- d. Suggest to plug in a DMX terminator into the DMX OUT in last unit of machine to improve signal reliability. Signal amplifier is required for long distance (>200m) DMX signal transmission.
- e. Control the output of bubble machine according to above DMX control.

5. Power OFF and clean up

- a. To turn off the machine, please POWER OFF and unplug the power cable.
- b. Please empty the fluid tank and wash the fluid plate with distilled water.
- c. For transportation or not use for a long time, please drain the water inside the fluid tray from output vent.

Δ Battery for Bubble machine

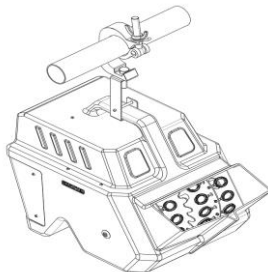
SHOWVEN bubble machine can be powered through 3 pcs of 18650 cells. New bubble machine come only with battery compartment, customer need to get 18650 cells locally. The battery we suggest to use is PANASONIC NCR18650B with flat head as below:



- a. Install the battery in correct direction, pay attention to the positive and negative pole. Wrong installation will damage the battery box or even machine.
- b. Connect bubble machine to AC power supply to activate battery whenever after install the battery.
- c. Charging automatically when machine connected with AC power supply (no matter machine was powered on or not)
- d. To avoid the damage of battery, charge the battery at least once per month.

Δ Truss Installations

An adaptor is required for truss installation. Please contact SHOWVEN (info@showven.cn) or SHOWVEN local partner for details of the adaptor.



Δ **Maintenance**

1. ONLY use SHOWVEN® original bubble fluid FX-BS.
2. Running the machine at least once per month.
3. Clean machine regularly avoid dust, liquid accumulate on the machine.
4. Whenever storage or not use the machine for a period of time, please use distilled water to wash the bubble generation system by filling the fluid tray with distilled water and firing the machine several minutes.
5. Whenever storage or not use the machine for a period of time, please drain the machine and keep it dry.

Δ **Warranty Instructions**

- ∨ Sincere thanks for your choosing our products, you will receive quality service from us.
- ∨ The product warranty period is one year. If there are any quality problems within 7 days after shipping out from our factory, we can exchange a brand new same model machine for you.
- ∨ We will offer free of charge maintenance service for machines which with hardware malfunction (except for the instrument damage caused by human factors) in warranty period. Please don't repair machine without factory permission.

Below situations NOT included in warranty service:

- ∨ Damage caused by use other type of bubble fluid which is not SHOWVEN® FX-BS.
- ∨ Damage caused by improper transportation, usage, management, and maintenance, or damage caused by human factors;
- ∨ Disassemble, modify or repair products without permission;
- ∨ Damage caused by external reasons (lightning strike, power supply etc.)
- ∨ Damage caused by improper installation or use;

For product damage not included in warranty range, we can provide paid service. Invoice is necessary when applying for maintenance service from SHOWVEN®.

SHOWVEN[®]



Showven Technologies Co., Ltd.

Tel: +86-731-83833068

Web: www.showven.cn E-mail: info@showven.cn

Add: No.1 Tengda Road, Liuyang Economic & Technical Development Zone, Changsha, Hunan,
410300, P.R.China